

# Boost Output Performance: UNIQUE FOLD

**TURBOX III** | Innovation Made in Germany

Servo Front-Fold Technology with intelligent programming. /  
Minimal distance between blanks. / Increased production speeds. /  
No more missed diagonal folds. /

**UNIQUE FOLD** – Worth the Investment

| [www.turbox.info](http://www.turbox.info) |



MADE IN GERMANY

 **BAHMÜLLER**  
BOXFLOW® Solutions

Germany · Wilhelm Bahmüller GmbH · 73655 Plüderhausen  
☎ +49 7181 809-0 · [info.w@bahmueller.de](mailto:info.w@bahmueller.de) · [www.bahmueller.de](http://www.bahmueller.de)

USA · Bahmüller Technologies, Inc. · Andy Reissmann  
☎ (704) 587 3506 · [info@bahmueller-usa.com](mailto:info@bahmueller-usa.com) · [www.bahmueller-usa.com](http://www.bahmueller-usa.com)



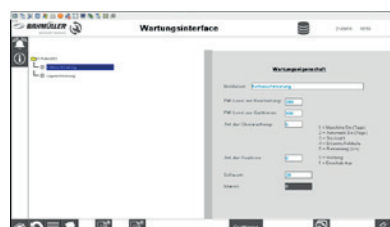
## Ready for the Future

Bahmüller's Turbox and Jetbox are well established in the corrugated converting industry – more than 75 units will be up and running by end of 2017. The GS certificate offers the highest standard for health and safety in Europe.

The company's Boxflow®Control has undergone a complete re-design. Now the machine is able to provide more sophisticated data about energy consumption and operational status.



With the optional maintenance billboard, operators now have a tool to document small check-ups and all necessary health and safety checks, direct into the machine's PLC. The data can also be made available by regular interface technology.



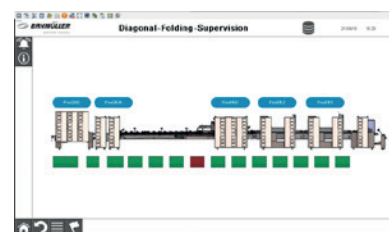
The company's main target is to provide sophisticated solutions and part of that is the newly developed DFS – Diagonal Fold Supervision – another contribution to zero defect delivery.

With the latest generation of Boxflow®Control, the Turbox can be equipped with a sensor kit positioned in the Dynamic Fold II section. The sensor block detects torn flaps and even misfolded flaps, by measuring the length and height.



**Different diagonal length of folded and misfolded flap**

Set-up of this kit is done mainly automatically, due to its location next to the powered top belts and independent from box type and style. The location provides best availability, even for small and narrow flaps, where optical systems tend to fail. The combination of different sensor types enables the system to work under standard lighting – no extras required. Sensor adjustment is done by a 'Golden Template' reference run. Faulty products will be ejected in the 'Unique Eject' module.



These systems grant the perfect preparation for the Powerpacker. Almost 30 machines have been installed now all over the world, offering significant benefits to the current users including:

- 40% higher production compared to manual pick-up;
- Reduced sick leave of employees due to less manual handling;
- Equal packaging and box count;
- Reduction of head count at the line.

Overall, customers are reporting an ROI of 3 to 5 years – depending on local circumstances.

Further to the basic Powerpacker strapping solution, Bahmüller are able to provide the latest system with ATS Banding – a 30mm wide film. The banding solution does not harm the sensitive surface and corners of the boxes. It is an excellent solution for high graphics and sensitive products.



Powerpacker ATS was awarded as a leading technical innovation at SuperCorrExpo in 2016. Furthermore, the Powerpacker can be installed behind almost any brand of speciality folder gluer.  
[www.bahmeuller.de](http://www.bahmeuller.de)